

# DIVE IN

Technical Rider

SOIF TOTALE



## CONTACTS

### **Administrative Manager**

Zoé Gravez

+33 (0) 6 71 66 87 98

production@soiftotale.com

### **Technical Manager**

Mia Mattenklott

+49 (0) 157 70 57 06 81

mia@soiftotale.com

### **Sound Technician**

Lucas Pierredon

+33 (0) 6 77 46 75 45

lucas@soiftotale.com

### **Assisted by**

Elise Martin

+32 (0) 456 018 159

elise@soiftotale.com

### **Lighting Technician**

Valentin Boucq

+32 (0) 474 440 453

valentinlight@gmail.com

# GENERAL TECHNICAL CONDITIONS

## SHOW

**Duration :** 60min

**Artists onstage :** 16

**Number of performances :**

This show can be performed a maximum of twice per day with at least three hours between end of the first performance and beginning of the second performance

## STAGE

**Dimensions:**

We require a stage with a minimum width of 9m, a minimum depth of 7m and a minimum height of 7m below the lighting truss.

**Type of flooring:**

The stage must be flat, it is not possible for this show to be performed on a floor with an inclination level of 1% or more. In the case of any such irregularity, please contact us as soon as possible with proposed solutions.

The stage is ideally covered by dance flooring or smooth wood.

It is important that the stage surface is clean. Dust, dirt or similar elements pose a risk to performers and may negatively impact performances of the show.

**Stage resistance:**

530 kg below the chinese pole. Please don't hesitate to contact us if a more detailed explanation is required.

## SPECIAL EFFECTS

**Smoke machine :** medium to high strength

**Vape pens :** A vape pen is used to create certain visual effects in the show. In order for these to be realised, it is important that air currents, fans or other ventilation systems present in the theatre are switched off for the duration of the show.

# GENERAL TECHNICAL CONDITIONS

## AUDIENCE

### **Orientation:**

Audience members can be placed either frontally or in a semi-circular arrangement depending on the theatre's capacity.

### **Audience capacity:**

The show can be performed to an audience of maximum 1500 people. This is of course dependent on the theatre's capacity and seating options.

## ANCHOR POINTS

### **Anchor points:**

We require 4 anchor points in total, each with a resistance of 350kg WLL (see diagram on page 7)

### **Type of anchor points:**

Ideally anchor points are attached directly to the floor however weights, water tanks or sand bags placed and secured to the floor are an option if slings or carabiners can be directly attached to each point. The base of wooden or metal columns provide another alternative, but again, only if slings or carabiners can be attached directly to each point.

## RIGGING POINTS

### **Rigging points:**

We require 4 rigging points in total, each with a resistance of 350kg WLL (see diagram on page 7)

### **Type of rigging points:**

Rigging points attached directly to catwalk or ceiling, or access to wooden or metal ceiling beams.

## STAGE CURTAINS

### **Pendrillonage à l'italienne + frise**

# CIRCUS APPARATUS

PROVIDED  
BY THE  
COMPANY

## **A rigging system for aerial disciplines:**

- 1 Intervention rope (9mm diameter) 30m
- 1 Max Load rope (8mm diameter) 30m
- 2 Omni-block pulleys (1.5 simple)
- 5 Rescue pulleys
- 1 Ascension rope handle
- Additional rigging hardware (swivels, carabiners, slings, etc.)

## **Apparatus used with rigging system:**

- 1 Aerial hoop
- 1 Dance trapeze
- 1 Pair of aerial straps

## **A truss system for additional aerial structure:**

- 1 3m Truss
- 2 2m slings
- 2 carabiners

## **Aerial apparatus suspended from truss:**

- 2 Pairs of aerial straps
- 3 Aerial ropes
- Additional rigging hardware (swivels, carabiners, slings, etc.)

## **Chinese Pole with three cables:**

- 1 Chinese Pole (5,55m high)
- 3 Ratchet straps
- 3 Cables
- 3 Ratchets
- Additional rigging hardware (carabiners, quicklinks, slings, etc.)

## **Other apparatus:**

- 1 Teeterboard (accompanied by specialised crashmats)
- 25 Juggling balls

# CIRCUS APPARATUS

TO BE  
PROVIDED  
BY THE  
THEATRE

**For the truss system:**

6 2m slings (with minimum resistance of 2 tonnes)

4 1m slings (with minimum resistance of 2 tonnes)

**For the rigging system:**

1 weight, 10kg minimum (ideally a sandbag)

In the case that our performances do not take place on consecutive days, or if we are unable to leave our material on stage overnight, the theatre must provide a storage space that is dry, clean and large enough for all equipment.

We also require a secured space that is clean and dry in which to store our instruments and musical material.

## STORAGE

# SETUP AND PACKDOWN

## Setup:

Full setup will take place over three 4-hour intervals which include the installation of light and sound equipment. Pre-mounting of lights is required.

The first stage is the installation of circus equipment and sound technique. Priority will then be given to lighting technique.

Please contact *Mia Mattenklott* (technical manager) concerning any potential modifications to the setup schedule in relation to specific requirements within the venue.

## Packdown:

Packdown will be carried out after the performance or the next day. This requires 2 hours in full.

**Setup and packdown will be carried out by the company in cooperation with the theatre**

(See previsual schedule at end of technical rider)

**A 25m<sup>3</sup> van to transport materials belonging to the company**



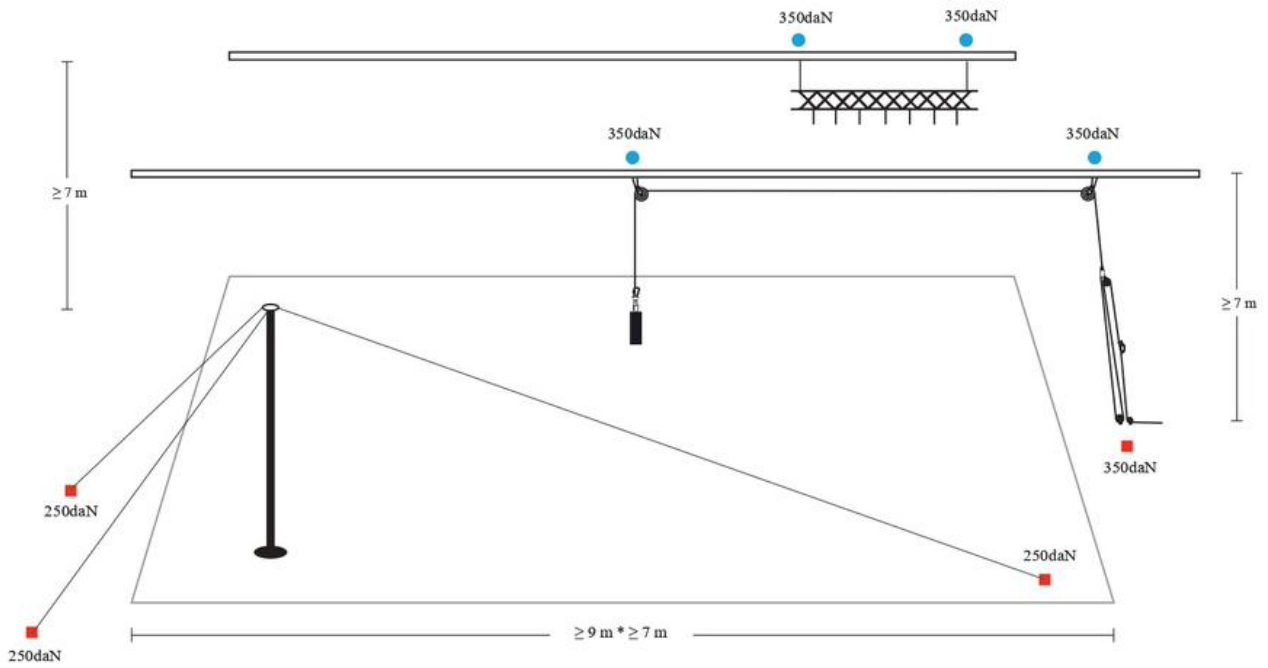
PROVIDED  
BY THE  
COMPANY

TO BE  
PROVIDED BY  
THE THEATRE

**Unloading bay suitable for a 25m<sup>3</sup> van.**

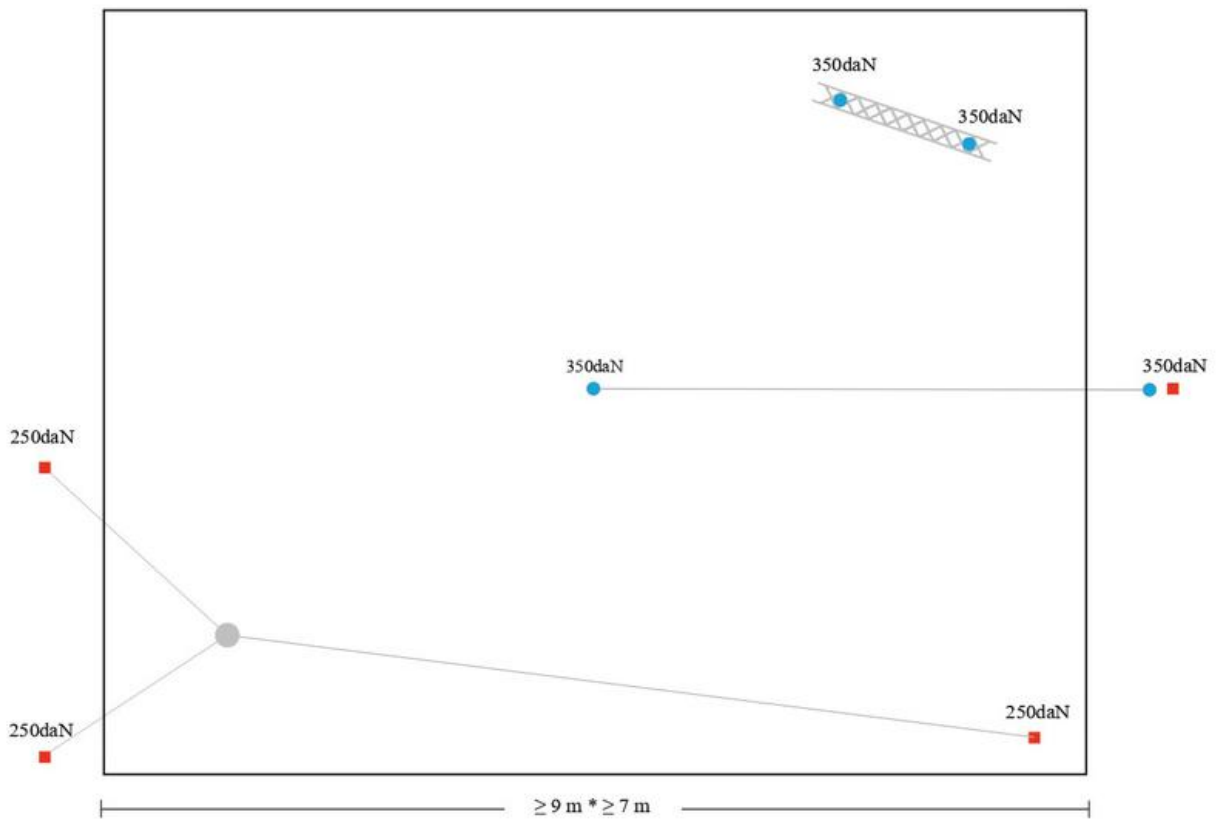
**Ceiling access for the installation of rigging and truss systems. Examples include use of an aerial work platform (such as a Genie scissor lift) or with ladders.**

# DIAGRAM OF THE STAGE frontal view



- profondeur minimale 7m
- largeur minimale 9m
- hauteur minimale 7m
- points d'ancrage
- points d'accroche
- minimum width 9m
- minimum depth 7m
- minimum height 7m
- anchor points
- rigging points

# DIAGRAM OF THE STAGE aerial view



- profondeur minimale 7m
- largeur minimale 9m
- hauteur minimale 7m
- points d'ancrage
- points d'accroche
- minimum width 9m
- minimum depth 7m
- minimum height 7m
- anchor points
- rigging points

# LIGHTS

PROVIDED  
BY THE  
COMPANY

- Console Avolites titan mobile

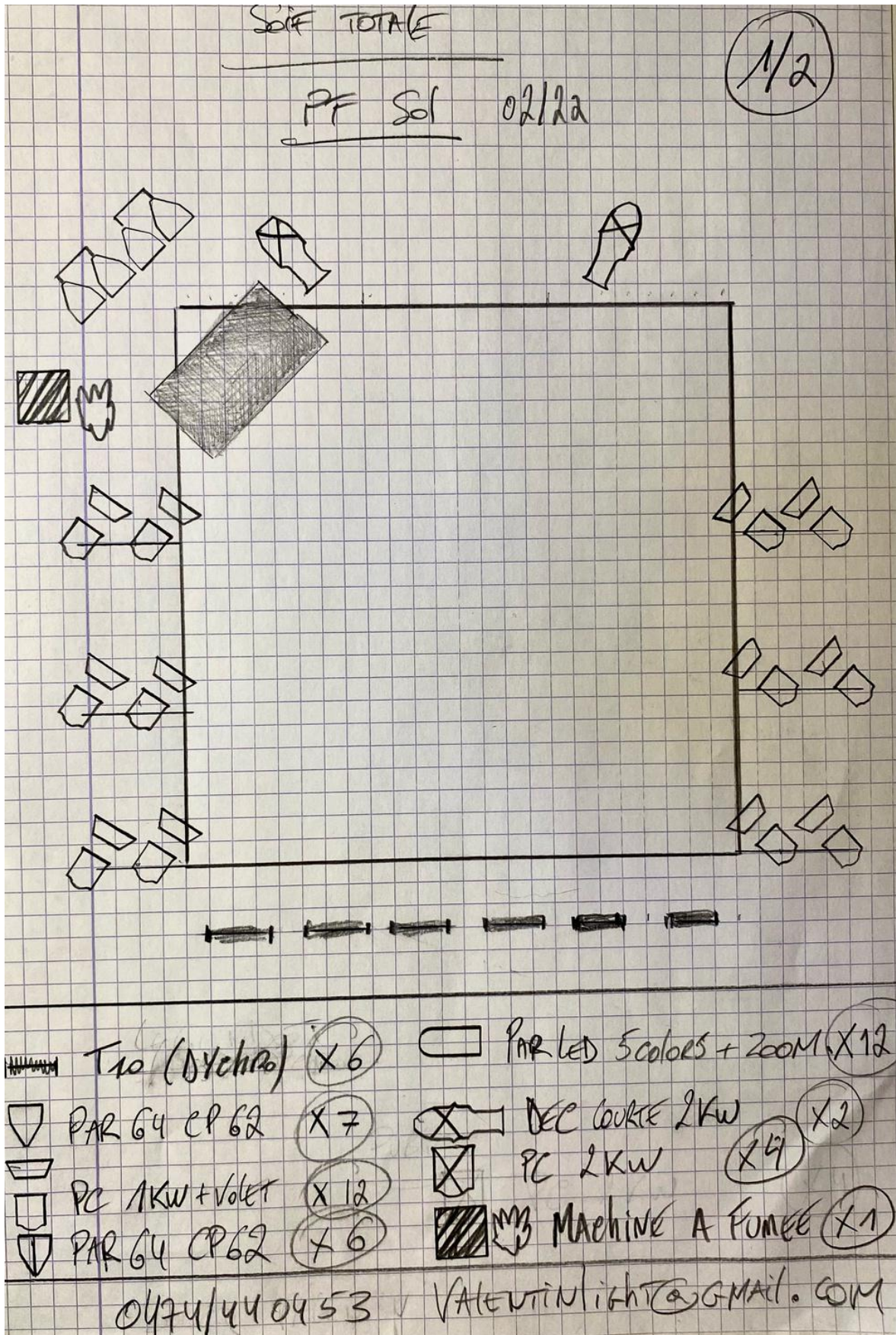
TO BE  
PROVIDED  
BY THE  
THEATRE

- 16 briteq BT orbit wash
- 6 échelles pour latéraux
- 5 T 10 actifs en bord de scène
- 9 pars cp62 pour ponctuels
- 4 découpes 2kw pour la face
- 7 découpes 2kw wide pour des ponctuels
- 12 pc 1kw 2par2 en 3 plans de latéraux (au sol ?)
- 1 machine à brouillard type « atmosphère » ou « df50 »
- 1 machine à fumée puissante type « élévation master blaster 1500 »

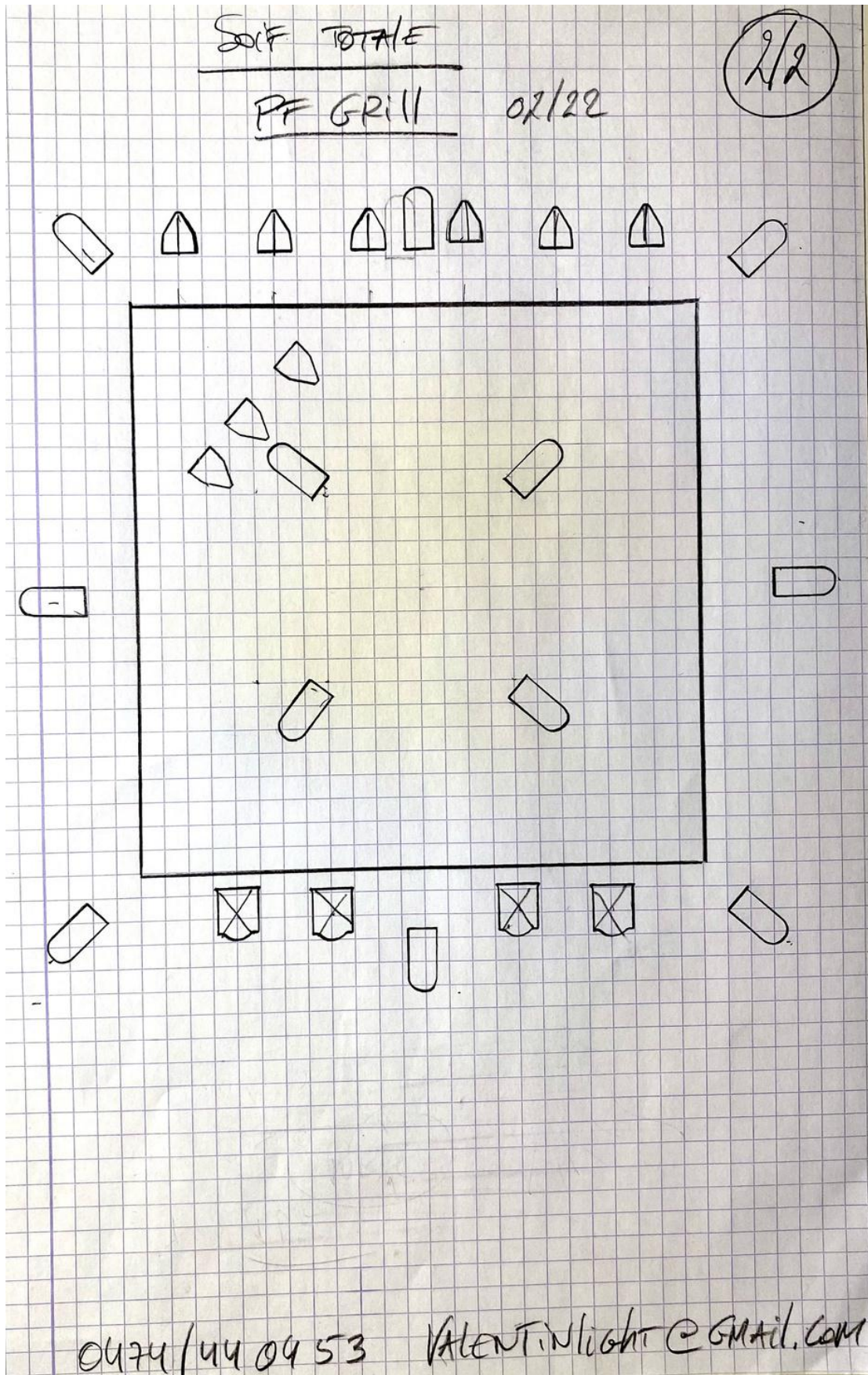
*Our lighting plan is still liable to modification, please contact the company for more information.*



# LIGHTING PLAN



# LIGHTING PLAN



## SOUND

### GENERAL PRECISIONS

DIVE IN's soundtrack was composed by Lucas Pierredon, an artist working in the company. The show is accompanied by live music played by three of our performers.

Instruments used onstage include; a digital piano / an electronic keyboard, an electric guitar, a bass guitar, a ukulele, an acoustic guitar and a synthesizer.

The piano, synthesizer and electric guitar are connected to a sound card. Four microphones (vocal and instrument) are connected to the mixing console.

The musicians will be seated upstage right together with all musical material. 2 platforms at +/-70cm height as a stage to raise the musicians.

Audio tracks are activated live during the show by one of the musicians via Ableton.

The sound control was created and backed up on a YAMAHA QL1 mixing console by sound technician Victor Petit.

If the sound control unit is located next to the light or video control units, it is important that the electricity supply for each unit remains separate.

## SOUND

PROVIDED  
BY THE  
COMPANY

- 1 MOTU sound card with 4 inputs + 4 outputs
- 1 MacBook Pro 2022 + Ableton
- 1 Shure BLX24E/PG58 S8 microphone (cordless)
- 1 bass guitar
- 1 Godin electric guitar
- 2 acoustic guitars
- 1 ukulele
- 1 shaker
- 1 small flute
- Electronic keyboard
- Synthesizer

TO BE  
PROVIDED  
BY THE  
THEATRE

- 1 amplification system sufficient and adapted
- 1 mixing console with a minimum of 10 XLR audio inputs
- 2 stage monitors
- 1 NORD piano (with a stand)
- 1 Moog Grandmother
- 4 guitar stands
- 2 Shure SM58 vocal microphones
- 2 Shure SM57 instrument microphones
- 6 DI boxes (1 per mic + 2 for sound card output)
- 8 classic jack cables
- 5 microphone cables (XLR)
- 1 table for sound card, laptop + Moog Grandmother (minimum 150cm x 70cm)
- 3 bar style high stools, (no plastic chairs or table)

## RECEPTION

### DRESSING ROOM & COSTUMES

- Dressing room for 16 artists, mixed gender is possible
- Accessible source of drinking water
- 1-2 clothes rails with hangers for costumes
- For performances over multiple days, the following is to be provided:
  - Washing machine
  - Dryer
  - Iron
  - Ironing board
  - Showers appreciated

### REFRESHMENTS AND CATERING

- Refreshments for the evening of each performance are appreciated: tea, coffee, fresh + dried fruits, etc.
- Meals for 19 people of which:
  - 4 are vegetarian
  - 4 are vegan (1 with a kiwifruit allergy)
  - 11 are omnivores,
    - 3 with lactose intolerance
    - 1 with a soy allergy

### ACCOMMODATION TRANSPORT

- Accommodation for 19 people to be provided: double and mixed gender rooms are possible
- 1 van with 3 people inside
- Transport by train and/or private vehicles for the remainder of the company's personnel.

**The theatre is responsible for all transport costs.**

We ask for free parking spaces to be provided for the van and 1 car for the duration of our stay.

# SCHEDULE

	T-MINUS 24h	SHOW DAY	T PLUS 24h
9am-1pm	Unloading van Setup and rigging	Lighting setup	Pack down Departure
1-2pm	Break	Break	
2-6pm	Setup and rigging continued	Rehearsals	
6-7pm	Interservice son	Stage setup	
7-8pm	Lighting setup	Warmup and performance prep	
8pm-		SHOW	